

MOXI

Infinite Motion x Innovation

MOXI Mocap Suit V100-R

User Manual



Last January , 2026

Table of Contents

01 MOXI MoCap Suit V100-R Equipment Overview2

02 Motion Capture suit Wearing Process.....5

03 Explanation of the Transponder Button Functions / LED Display Description8

04 Connect the wires to the Transponder9

05 Install TransEZ APP(iOS/Android) ...10

06 Transponder Pairing and TransEZ App Setup Guide10

07 Wireless MOXI / MOTi Sensors.....15

08 Complete Setup: Store the Transponder and Wear the Wireless MOXI / MOTi Sensors18

09 Update Suit Components20

10 Appendix.....25

01

MOXI MoCap Suit V100-R Equipment Overview

Thank you for purchasing MOXI MoCap Suit V100-R. Please read the user manual for detailed instructions on proper suit wearing and operating procedures. If you have any further questions, refer to the contact information on the back of the manual or visit the MOXI MoCap Suit V100-R official website for assistance.



MOXI sensor (for Europe & Japan)

Vest

Weight: 294 g
Size:
• Length 40 cm
• Shoulder Width 36 cm
• Chest Circumference Minimum 54 cm to Maximum 90 cm

Belt

Weight: 144 g
Size:
Minimum: 70 cm
Maximum: 130 cm

Upper Arm Strap

Weight: 89 g
Size:
• Upper: Arm 43 cm
• Wrist: 25 cm

Leg Strap

Weight: 114 g
Size:
• Thigh: 66 cm
• Calf: 45 cm

Carry Case

Weight: 1962 g (including all accessories)
Size: 30 cm × 16 cm × 23 cm

Package Contents



MOXI Sensors x 5



Strap



Connecting Cable



MOXI Charging Cable



Transponder



HUB Sensors× 2



Sensor Units × 8

MOTi sensor (for U.S & Asia)

Vest

Weight: 294 g

Size:

- Length 40 cm
- Shoulder Width 36 cm
- Chest Circumference Minimum 54 cm to Maximum 90 cm



Belt

Weight: 144 g

Size:

- Minimum: 70 cm
- Maximum: 130 cm



Upper Arm Strap

Weight: 89 g

Size:

- Upper: Arm 43 cm
- Wrist: 25 cm



Leg Strap

Weight: 114 g

Size:

- Thigh: 66 cm
- Calf: 45 cm



Carry Case

Weight: 1962 g (including all accessories)

Size: 30 cm × 16 cm × 23 cm



Package Contents



MOTi Sensors x 5



Strap



Connecting Cable



MOXI Charging Cable



Transponder



HUB Sensors x 2



Sensor Units x 8

02

Motion Capture suit Wearing Process

- ※1. The suit comes with sensors are already installed. This instruction is for your reference.
2. If you need to wash the suit, please ensure that the sensor units and hubs are completely removed from the clothing.



MOXI MoCap Suit
V100-R Quick Wear
Guide



2-1 HUB Sensors Installation & Detachment

Installation:

1. Attach the HUB sensors to the Vest and Belt.
2. Ensure the HUBs on the vest and belt are aligned vertically in a straight line.
3. During installation, point the "HUB" label forward.
4. Gently press the HUB sensor into its interface until it clicks into place.

Detachment & Cleaning:

1. To clean the vest, detach the sensor HUBs. You may need to apply slight force to remove them.

2-2 Sensor Units Installation & Detachment

Installation:

1. There are a total of eight sensor units.
2. Install them individually on the left and right sides of the Hand Straps and Leg Straps (two sensors per side).
3. Align the "Sensor" label forward.
4. Gently press each sensor into its interface until it clicks into place.

Detachment & Cleaning:

1. To remove the sensors, gently pull them from the interface; slight force may be needed.
2. Detach all the sensor units completely before cleaning the straps.

2-3 MOXI MoCap Suit V100-R Dressing Instructions



2-3-1 Wearing the Vest

1. Identify the front and back of the vest.
2. Ensure the HUB sensor is positioned at the center of your chest.
3. Adjust the back Velcro straps to secure the vest comfortably.



2-3-3 Connecting Hand Strap Data

Connect the data connectors on both upper sides of the vest to the corresponding connectors on each upper arm strap.

2-3-2 Wearing the Upper Arm and Wrist Straps

1. Place the upper arm strap 5–10cm above the elbow and fasten it lightly to hold its position.
2. Attach the wrist strap on your wrist.
3. Tighten both straps so they are snug and do not slip.
4. Ensure the “Sensor” label points upward and outward.



2-3-4 Wearing the Belt

1. Wear the belt and adjust it so it sits comfortably.
2. Ensure the “HUB” label on the belt sensor points upward (toward your stomach).
3. Ensure to align the belt HUB sensor directly below the vest HUB sensor.

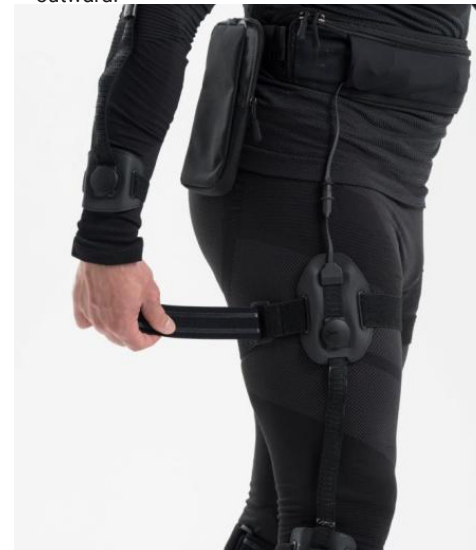
2-4 Connecting HUB Sensors to the Transponder Straps

1. Connect the long cable to the upper-body HUB sensor, then attach it to the upper-body port on the transponder.
2. Connect the short cable to the lower-body HUB sensor, then attach it to the lower-body port on the transponder.
3. Use the icons on the transponder as a guide to ensure correct connections.



2-5 Wearing Thigh and Calf Straps

1. Put the thigh strap in place and fasten it.
2. Attach the calf strap just below the knee.
3. Tighten both straps so they stay secure without slipping.
4. Make sure the “Sensor” label points up and outward.



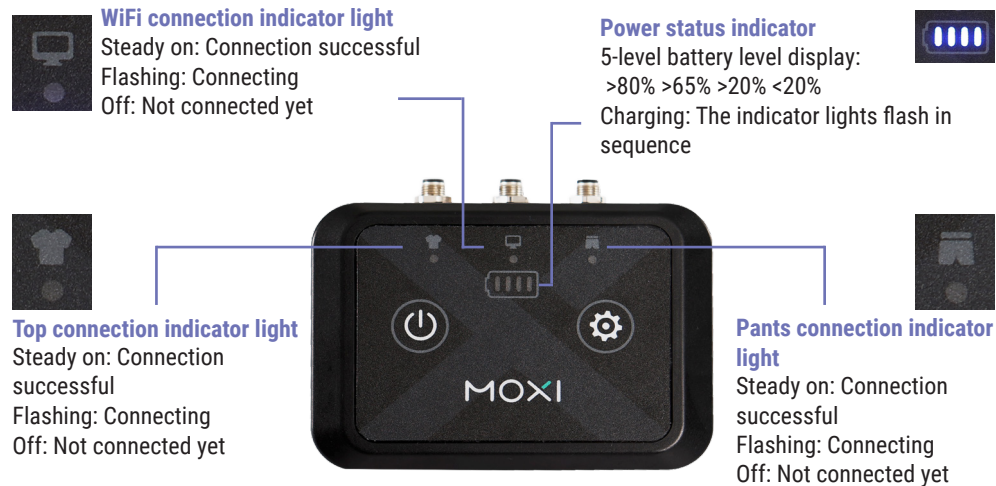
2-6 Connecting Leg Strap Data

Connect the data connectors on both sides of the belt to the corresponding connectors on each thigh strap.



03

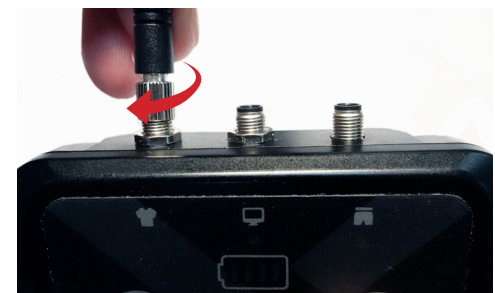
Explanation of the Transponder Button Functions / LED Display Description



04

Connect the wires to the Transponder

Connect the sensor cables of the top and pants to the Transponder carefully, and refer to the icons to ensure the connection is correct.



※ **Special Additional Notice:** Please pay attention to the fact that this connector adopts a unique foolproof design. Ensure proper alignment with the connection port during installation to guarantee a correct connection and prevent wire damage, which could affect its lifespan.

05

Install TransEZ APP(iOS/Android)

In order to set up the transponder, you must install the TransEZ APP to your smartphone. Please scan the QR code to download it.



iOS



Android

06

Transponder Pairing and TransEZ App Setup Guide

In order to set up the transponder, you must install the TransEZ APP to your smartphone. Please scan the QR code to download it.

※ Here is an instructional video that shows how to set up the transponder with the TransEZ app, step by step :

[Watch Here](#)

※ After the first time initial setup, the transponder will connect automatically in future uses. There's no need to open the TransEZ App—just turn on the transponder and wait a few seconds until the middle indicator light steady.

Make sure to use the same router and wear the wireless sensors in the same positions as during the first setup.

6-1 Transponder Initial Setup



6-1-1 Tap the Power ON/OFF button

Power ON : Short press for 1 second to power on.

※ Note :To Power off-Press and hold until the indicator light turn off.



6-1-2 Step 2 : Wait for Flashing to Turns Off

After powering ON, the WiFi pairing button will flash, indicating that the Transponder is turned on. Please wait until the indicator light turns off before proceeding to the next step.

6-1-3 Transponder Pairing Search

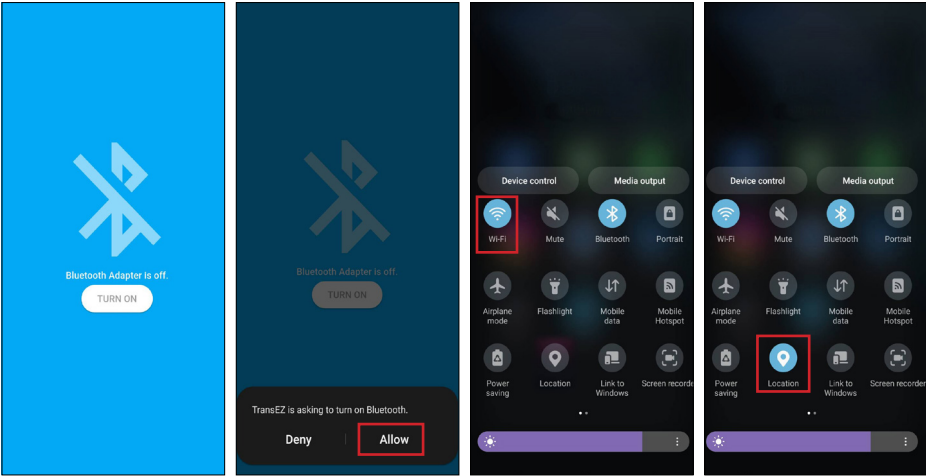
Press and hold the setting button for around 6 seconds until the middle light indicator starts flashing, then release it to start searching for the Transponder and WiFi.



6-2 TransEZ APP settings

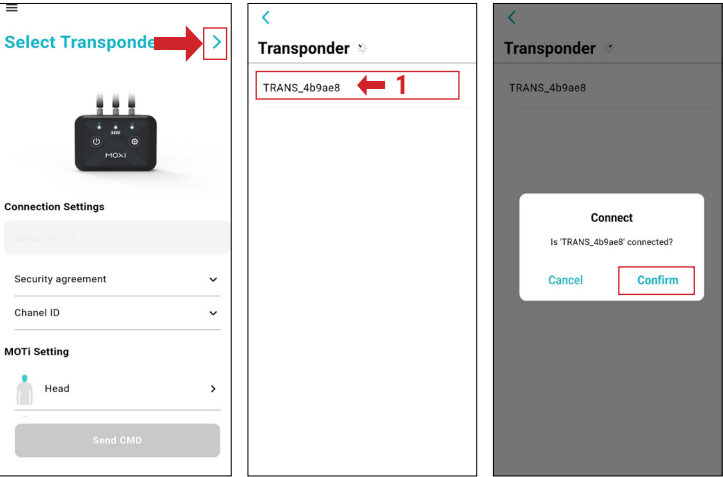
6-2-1 TransEZ Initial Setup

Open transEZ App



※ Please enable Bluetooth, Wi-Fi, and GPS location on your phone; otherwise, the Transponder cannot be detected or connected properly.

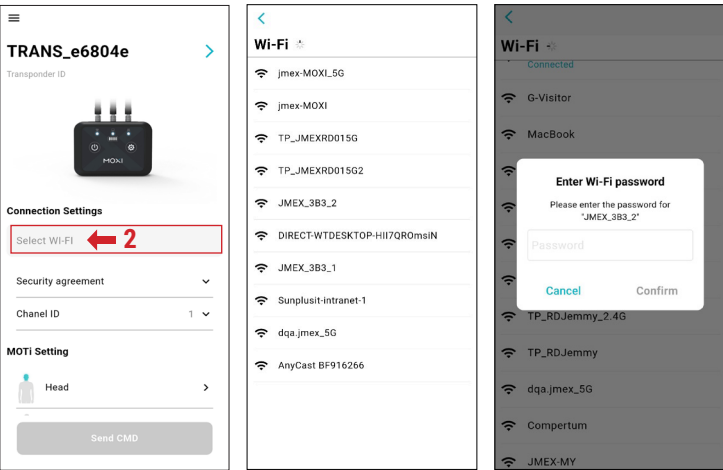
6-2-2 Pair the Transponder

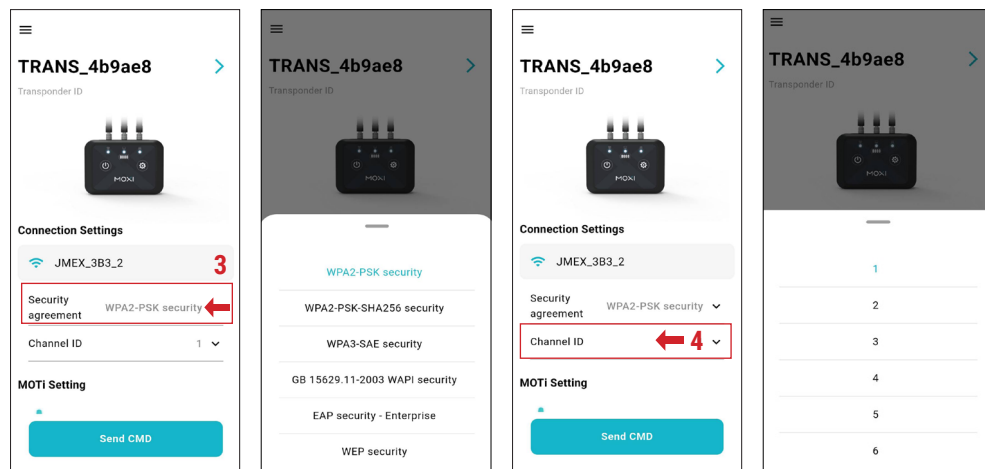


Click "Select Transponder" to begin searching for and pairing with the Transponder.
※ Ensure that the Transponder is powered on and in pairing mode (Wi-Fi indicator flashing continuously). The search process may take 1 to 30 seconds, so please be patient.

※ If the Transponder does not appear in the search after an extended period, power it off and restart the setup process. Please refer to section 5 for instructions.

6-2-3 Connection settings





Click "Select Wi-Fi" and then choose the Wi-Fi network you want to connect to from the list. If there is no specific Wi-Fi security protocol, Please select "WPA2-PSK security", the default Channel ID is 1.

※ When multiple MOXI devices are connected to the same Wi-Fi, please assign device IDs in sequence. For example: Device A selects ID1, and Device B selects ID2.

The Wi-Fi connection settings are now complete.

07

Wireless MOXI / MOTi Sensors

7-1 Introduction to Wireless MOXI Sensors



Power on/off button

Long Press :
Hold the button until the White light turns on to power on/off the MOXI.

※ If MOXI sensor takes more than 10 minutes without use, it will automatically shut down to save power.

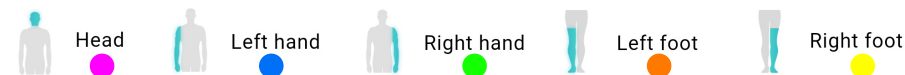
※ In this case, simply turn the MOXI sensor back on by pressing the ON/OFF button. The White light will start flashing again.



MOXI sensor serial number

Label serial number when pairing with the Transponder.

Body Part Indicator Light Description



Connection Status : White light blinks three times

Connected : Corresponding body part light stays on

Disconnected(not connected to the Transponder) : White light stays on

(not connected to computer, but still connected to the Transponder) : body part light

stays on

In Motion : Body part light blinks (once every 3 seconds)

Low Battery (20%) : Red light keeps blinking

Low Battery (5%) : Device shuts down

Charging : Red light stays on

Fully Charged : White light stays on

7-2 Introduction to MOTi Sensors

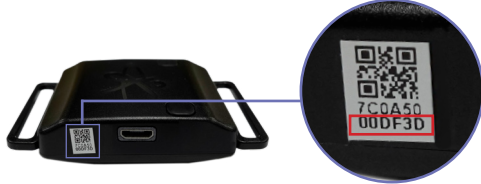


Power on/off button
Short Press :
The blue light flashes three times to turn on MOTi sensor.

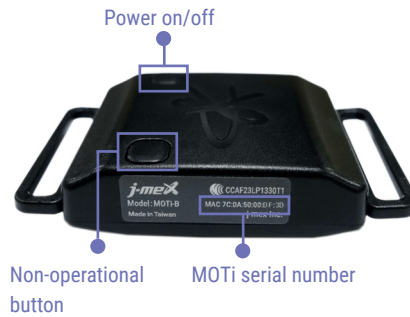
Power on/off button
Long Press :
Hold the button until the red light turns on to power off the MOTi.

※ If MOTi takes more than 5 minutes without use, it will automatically shut down to save power.

※ In this case, simply turn the MOTi back on by pressing the ON/OFF button. The blue light will start flashing again.



Label serial number when pairing with the Transponder.



7-2-1 MOTi and Straps installation method

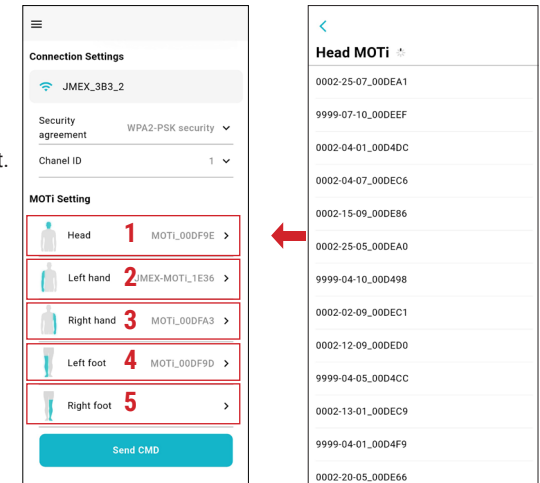


7-2 TransEZ - Wireless MOXI / MOTi Sensors Settings

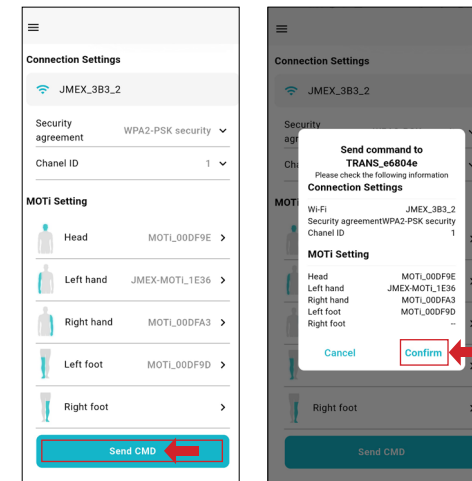
1. Please turn on each wireless MOXI / MOTi sensor that you want to connect.
2. Click "Select MOXI / MOTi" for the corresponding body part and choose the specific serial number to be used for that part. Repeat this step for all the wireless MOXI / MOTi sensors.

※ Each Wireless MOXI / MOTi sensor has a unique serial number.

Select any MOXI / MOTi sensor during setup, but make sure the selected sensor's serial number matches the original choice and is worn on the correct body part.



7-3 Complete the connection



Once the settings are complete, click "Send Command." If the Transponder is successfully connected, it will automatically power off.



※ Ensure to manually turn on the Transponder by pressing the power button again. If the connection is successful, all three indicator lights will stay on.

※ After setting up the transponder with the TransEZ app, keep the app running in the background (don't force close it). Closing it will cause the wireless sensors to disconnect.

08

Complete Setup: Store the Transponder and Wear the Wireless MOXI / MOTi Sensors

8-1 Secure the Transponder Inside the Pocket

After the connection is completed, please place the Transponder firmly in the zipper pocket on the back side of the pocket.

※ Avoid jamming the transponder and zipper to ensure safe and stable use.

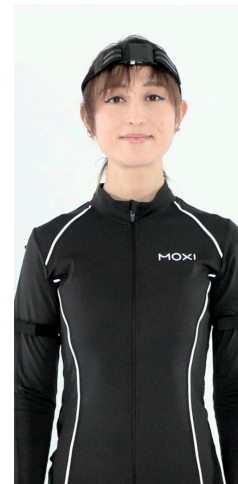
※ Make sure all three indicators are showing a steady light.



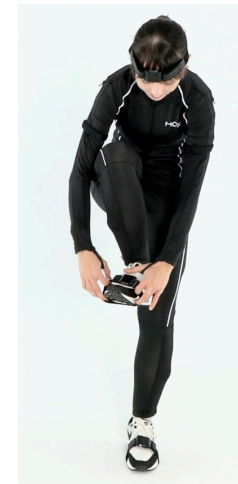
8-2 Store the excess cable length into the corresponding compartments. Refer to the pictures below for guidance.



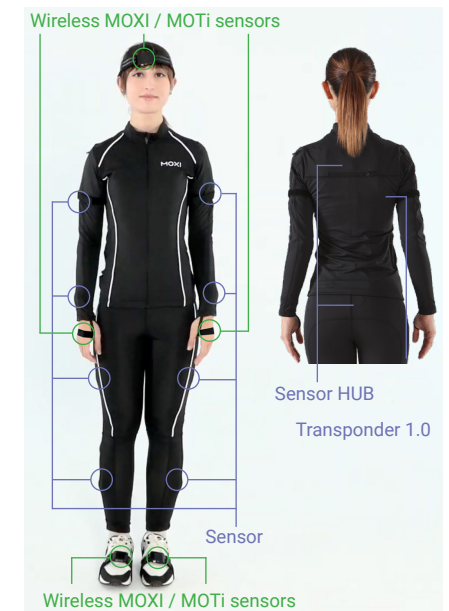
8-3 Place the Wireless MOXI / MOTi Sensors on designated body parts (Images are for reference only)



The long strap is mounted on the head.



The four short straps are fastened on each foot and hands.



09

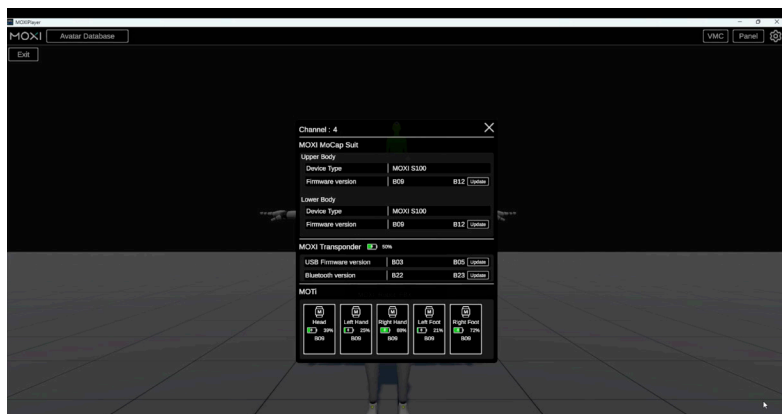
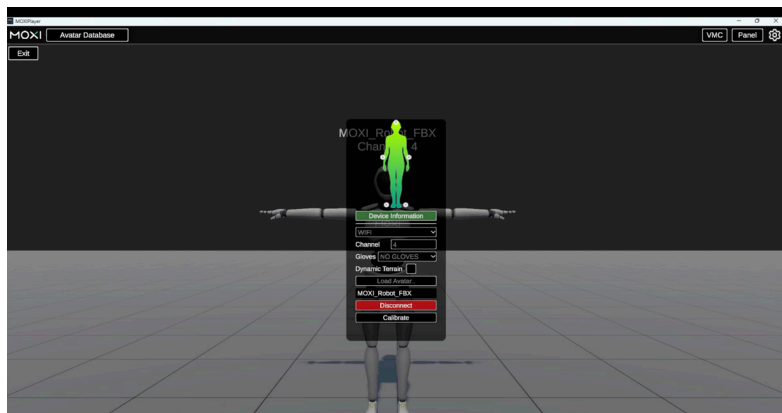
Update Suit Components

For best performance, we recommend updating the MOXI MoCap Suit software before starting your first session.

9-1 Update Suit Components

Press “Device” in the software to review all component firmware versions:

- 2 × Sensor Hubs
- Transponder (BT firmware + USB firmware)
- 5 × Wireless Sensors

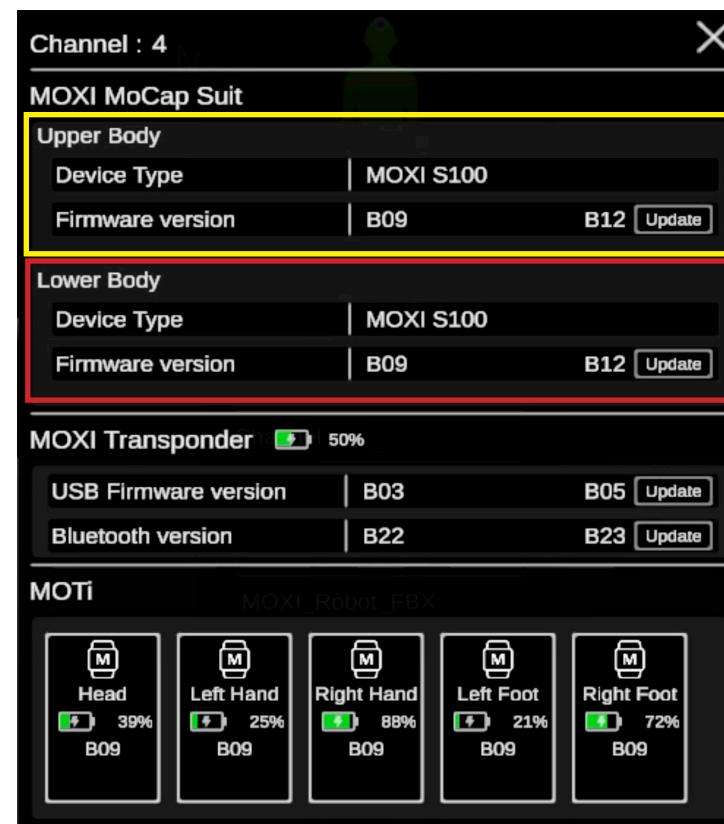


9-2 Sensor Hubs Firmware Update

If a new firmware version is available, an “Update” icon will appear next to the current firmware version.

For your reference:

- The Upper Body Hub is marked in yellow
- The Lower Body Hub is marked in red



1. To start updating the Upper Body Hub firmware:
 - Click the “Update” icon next to the current firmware version.
 - Connect the **hub directly to your PC using the Micro USB → Type-A cable.**
 - Follow the on-screen instructions to complete the update.
2. After successfully updating the Upper Body Hub, repeat the same process for the Lower Body Hub.

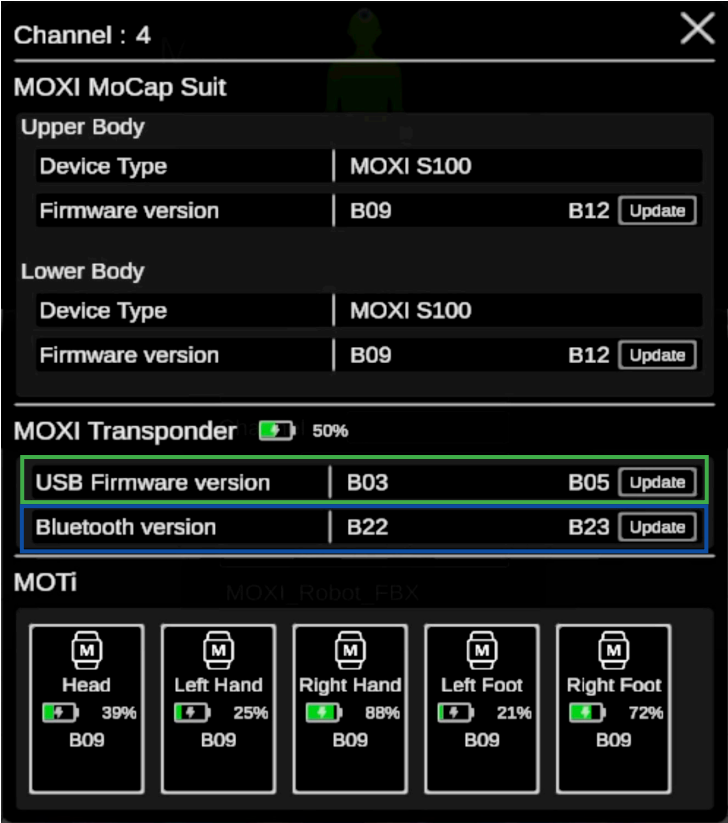
For detailed guidance, watch this instructional video: [Click Here](#)

9-3 Transponder Firmware Updates

The transponder firmware needs to be updated in two steps:

- Through the TransEZ app using Bluetooth.
- Through the MOXI Player software using a USB cable.

➡ MOXI Player - Device will show exactly which part needs updating each time. See the picture below for reference.



9-4 Transponder Firmware Update - Through TransEZ

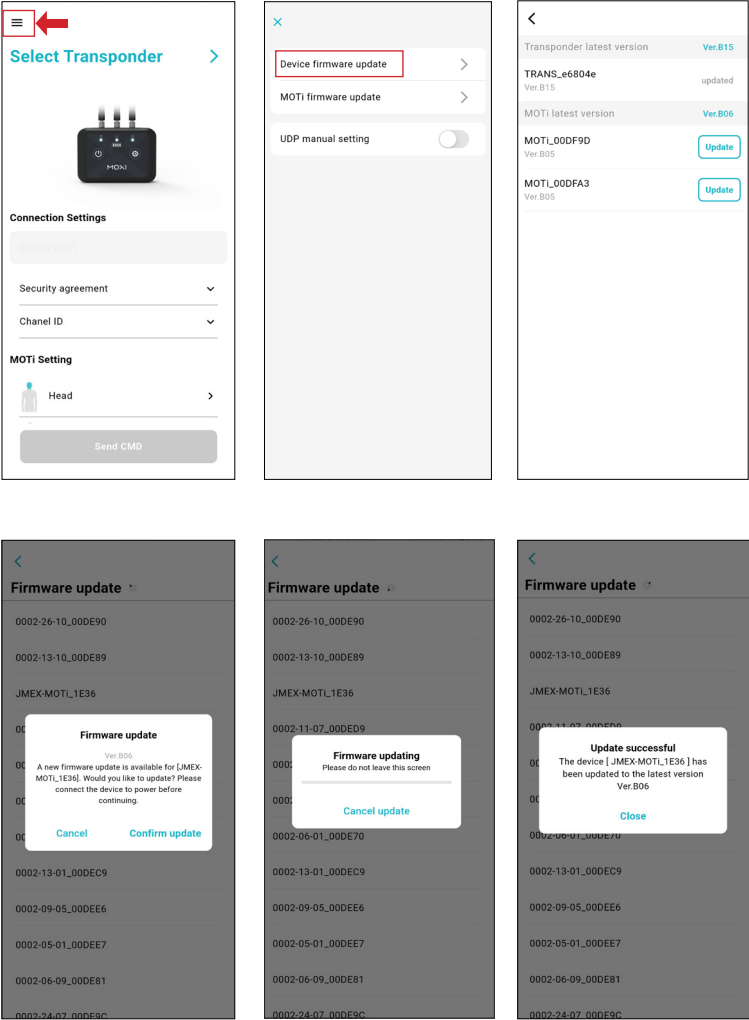
Before checking for updates, please ensure that the Transponder is powered ON, please follow the steps below.

※ Make sure the Transponder is in search mode. Please long-press the Settings button until the middle indicator light starts blinking.

9-5 Transponder : View Firmware Version/Update

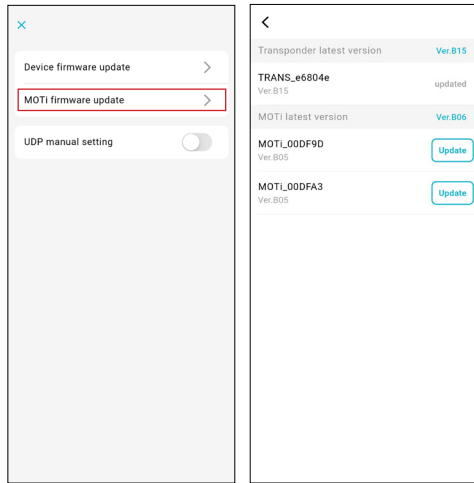
Click the menu in the top left corner to proceed with the update.

Once you reach the device firmware update page, click the Transponder to initiate the update.
※ During the Transponder firmware update, ensure that you do not turn ON or OFF the transponder. Once the upgrade is complete, the indicator lights will turn off. You can then turn it on and begin using it.



9-6 Wireless MOXI / MOTi Sensors: View Firmware Version/Update

After accessing the MOXI firmware update page, choose the MOXI / MOTi Sensor to start the update



※Make sure the MOXI / MOTi sensor is plugged into a power source (such as a PC, power bank, etc.) to successfully update the MOTi firmware. Otherwise, the update will fail.

※Here is an instructional video that shows how to update MOXI Firmware : [Watch Here](#)

10

Appendix

1. Suit Washing Guide

- ➡ Before washing, please ensure to remove the 8 sensor units and 2 sensor hubs.
- ➡ Machine washing is not advised! Instead, we suggest gently wiping the surface with a soft cloth slightly moistened with alcohol-wipe or another mild cleaning solution.

2. Others

- ➡ After installing the MOXI Software, Windows Firewall may **block or limit the software's access**, which can cause connection failures with the suit. It is highly recommended to verify that Windows Defender Firewall allows MOXI to communicate both privately and publicly.

Follow these steps:

1. In the Windows search bar, type **"Windows Defender Firewall"** and open it.
2. Click Change settings.
3. Locate MOXI Software and ensure both Private and Public check boxes are selected.
4. Click OK to save the changes.

For detailed guidance, please watch the instructional video: [Click Here](#)



Contact us

Email: sales@jmex.com.tw

Address: B2, 3F, No.1, Li-Hsin 1st Road, Hsinchu
Science Park, Hsinchu, Taiwan 30078, R.O.C.

Tel: +886-3-6661036

<https://jmex.com.tw/>